

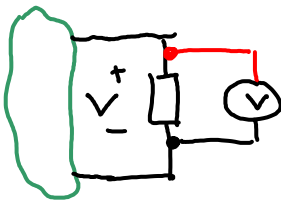
Useful Tips for the Practice Test

Thursday, December 16, 2010
8:51 AM

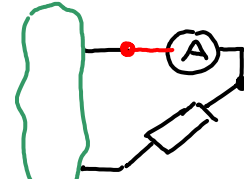
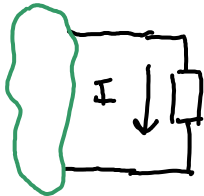
Useful Tips for the Practice Test

Measurement

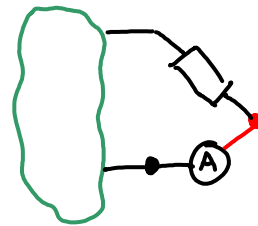
Voltage



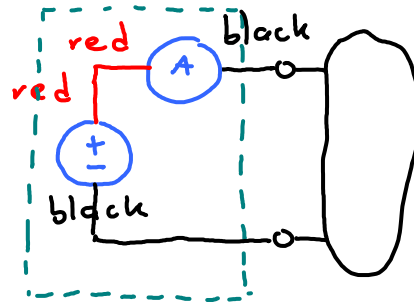
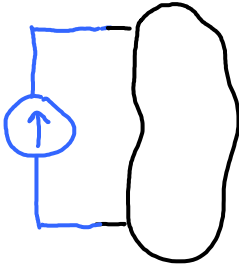
Current



or



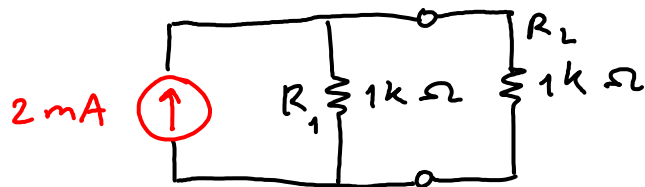
Current Source



Act as a fake current source.

Example:

- ① suppose you want to construct the following circuit



Use





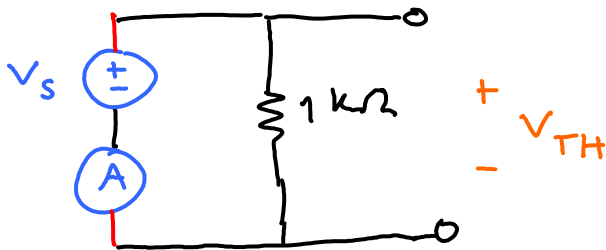
Adjust V_s to make 2mA shows up on (A).

($V_s = 1V$ is required to make this happens.)

- ② suppose we want to find the Thevenin equivalent at R_L using R_L as a load, then need to measure the open circuit voltage of



Again, we use



Note that 1V will only gives 1mA
 so, need to readjust V_s to 2V to get 2mA
 @ (A)